



EDUCATIONAL INSTITUTION



HOTELS



OFFICE SPACE



MALLS

ELV INFORMATION TECHNOLOGY

PRE QUALIFICATION FILE





TABLE OF CONTENTS

- 1.0 About Extra Low Voltage Division**
- 2.0 Quality Plan for Information Technology Division**
 - 2.1 UAE Organizational Chart**
 - 2.2 Tender**
 - 2.3 Design**
 - 2.4 Project Execution**
 - 2.5 Installation, Control & Reception**
- 3.0 Structured Cabling System**
 - 3.1 IT Network Solutions**
 - 3.2 Projects Under Execution**
 - 3.3 References for Structured Cabling**
 - 3.4 Etisalat Contractor - eLife**



TABLE OF CONTENTS

3.5 Certificate of Appreciation

3.6 Quality of Work

3.7 Equipment Used for Structural Cabling

4.0 Uninterruptible Power (UPS) Supply System

4.1 APC-MGE UPS Systems – 10KVA up to 1 MW

4.2.1 Infosec UPS Systems – 1kVA up to 300kVA

4.2.2 Infosec UPS Systems – 500VA up to 24k VA

4.3 In-house Workshop and Testing Facility

4.4 Equipment Used for UPS Installation & Commissioning

4.5 UPS Maintenance Contract

4.5.1 References for UPS Systems in UAE



TABLE OF CONTENTS

5.0 Active Components

5.1 Area of Expertise in Active Components

5.2 Reference for Active Components in UAE

6.0 Data Center

6.1 Components Included within Data Center

6.2 Data Center Solutions

6.3 Reference for Data Centers in UAE

1.0 ABOUT INFORMATION TECHNOLOGY DIVISION

Verger Delporte UAE Ltd (VD) has been operating in UAE since 1977 and have developed extensive experiences in many fields (i.e., Switchgear, IT, Trading, Contracting and EXTRA LOW VOLTAGE DIVISION “ELVD”). Verger ELV Division is one of the Partners of APC by Schneider and Infosec UPS systems. Additionally, holds partnerships with leading American and European Structured Cabling System manufacturers.

VD's ELV IT provides cable plant installation and enterprise-wide rollouts of network systems, services and products, systems and network integration, and related information technology services.

These include clients in Residential, Government, Defense, Telecommunication, Commercial and Retail markets. Information Technology Division can provide the media infrastructure that connects various networks, servers, personal computers, phone systems, video surveillance equipment or other communication devices throughout a building, Local Area Network or a Wide Area Network.

With our own design department and experienced personnel, we design and install intelligent and logical structured cabling systems that conform to the client's requirements and specifications. VD's is certified to provide you with the very best solutions from the industry's leading manufacturers .

We adhere to the highest standards of corporate governance by establishing processes and practices that promote and ensure integrity, compliance and accountability.



2.0 QUALITY PLAN

Scope of Application : IT Infrastructure Division Projects

Purpose : Internal organization in business key-processes to meet Project's QHSE requirements

1. Marketing & Business Development:

- To report to ELV Division Manager for market situation, forthcoming tenders, on-going rough quotation.
- To coordinate with ADM for Commercial and legal terms with local authorities.
- To collaborate with FIN, as a facilitator to settle financial dispute with customer.
- To ensure the smooth and steady transfer of responsibility with Operations Manager for projects execution, with external partners and decision makers.

2. Contract review:

Prior to the acknowledgment of order, under the responsibility of Sales Manager/ Sales Engineer:

- To check that VD offers meet client's contractual requirements in all respects.
- To make sure the agreed technical solution/scope of works remain within our capacity.

3. Project programming:

Under the direction of Project Coordinator, to plan if applicable adequately the tasks and their related human and material / equipment resources as per project:

- Design (with the monitoring of CD Manager if needs be)
- Material selection, with optimal time margin for customer's approval.
- Material procurement and execution.
- Final inspection, testing and commissioning.
- Project hand over.

4. Design:

The design steps, if any, will be under the monitoring of Operations Manager. The CD design section may intervene (*Refer to Design Section of MP2 - Contracting Division Management Process*). In that case and in order to obtain the best result, a permanent coordination between Operations Manager and CD Manager will take place.



2.0 QUALITY PLAN

5. **Material Control:** (Refer to GP6 - Purchasing and Materials Control Procedure)

a). **Selection :** Under the responsibility of Project Coordinator and Operations Manager Coordinator:

- To pick up from clients suggestions or/ and VD list of approved suppliers Quality, Health, Safety and Environmental performance-rated by senior responsible and QHSE Manager) the right materials, complying with the specs and applicable quality standards.

- To submit the selection list to clients approval.

b). **Purchasing:**

- To place the corresponding comprehensive order, thoroughly reviewed and approved by ELV Division Manager/Operations Manager/Project Coordinator and Engineering Section.

c). **Incoming Goods Inspection:** Under the responsibility of Engineering Section/Project Coordinator and / or ELV Engineer, to check materials compliance with the specified requirements, from optimally defined scrutiny.

d). **Site procurement if applicable:** Under the control of Engineering Section and/or Project Coordinator, to thoroughly plan and adequately man the logistical support to site, arranging delivery of materials within the allotted time in the required status, using safe, reliable and well-designed handling and transportation means.

6. **Execution:** (Refer to HSIM 6301)

Under the control of the ELVD Manager/ Operations Manager and/or Project Coordinator, to program work and detailed schedules, reviewed and updated according to actual execution.

7. **Inspection, Testing & Commissioning:**

Carried out by duly authorized personnel, under the control of Operations Manager/ Project Coordinator:

- To inspect wholly the site, checking the quality of the work.

- To perform the required tests, thoroughly recording the results on pre-formatted logging sheets, demonstrating the safe and conform operating of the installation.



2.0 QUALITY PLAN

8. **Project Hand-over / Maintenance period:**

Under the control of Operations Manager/ Project Coordinator:

- To hand over a comprehensive quality documentation with a view to provide essential instruction for project operating / preventive maintenance / troubleshooting.
- To carry out in a professional way, any required intervention as per the gravity of carefully analyzed technical issue.

9. **Project's Documents control:** (Refer to GP1 - General Documents Control)

Under the responsibility of Operations Manager/Project Coordinator and IT Controller:

- To file, update, withdraw, supersede the project-related documents, when necessary, as per their relevance and importance with regard to quality requirements.
- To make information easy to retrieve, using electronic (diskettes, hard-disks) or paper support, where applicable.

Related Process: MP5 – ELV Division Management Process

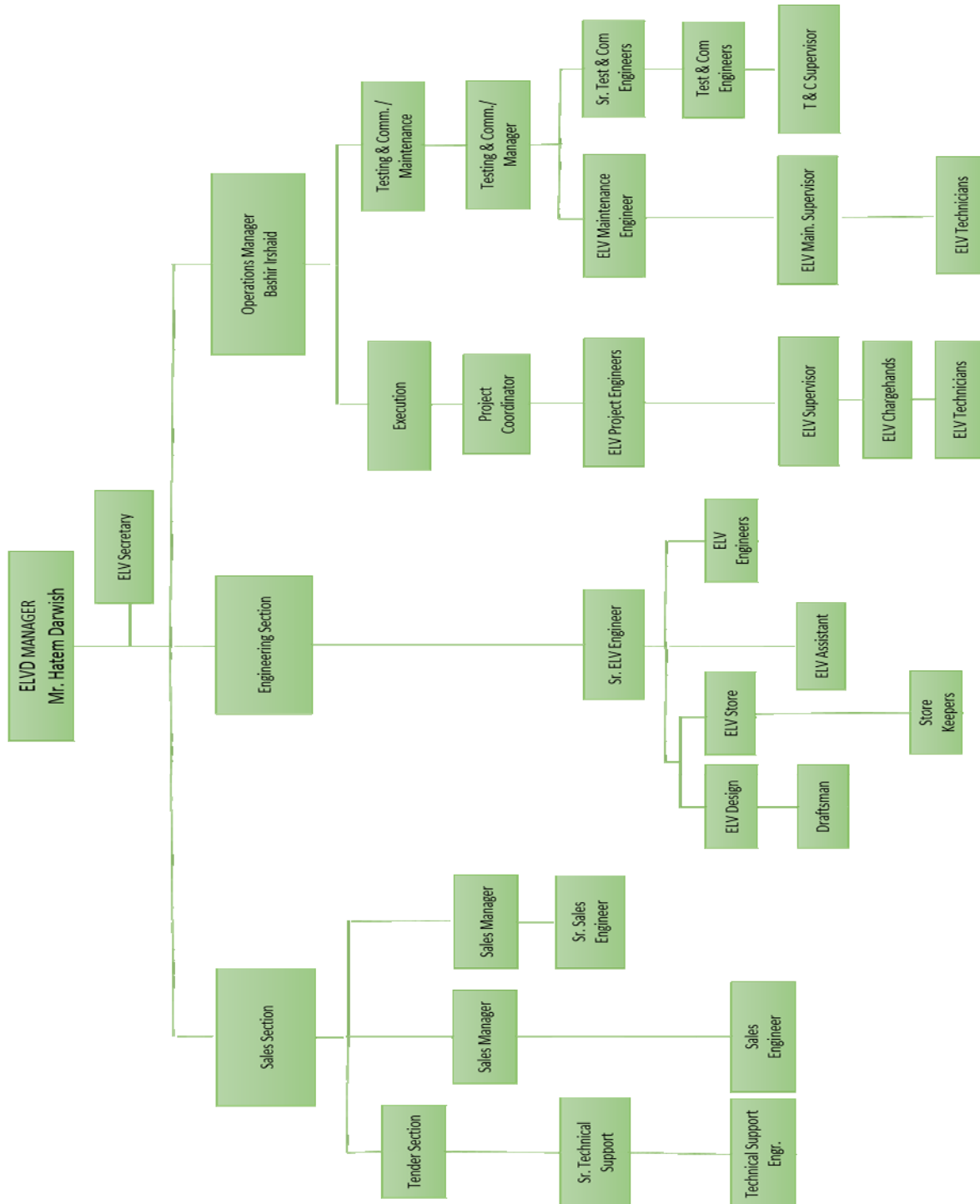
With its *Integrated Management System Documentation (IMSD)*, the company benefits also from well-thought management processes and functional procedures, making our organization, if not flawless, at least quick-responding to any challenging quality issues. The personnel, whose competence and skills are under permanent watch (*GP5 - Training Procedure*), can cope confidently with potential or actual anomalies (*GP2 - Non-conformity Procedure*), or general issue handling, with (*GP3 - Corrective and Preventive actions Procedure*).

Furthermore the whole of practices related to business key-processes, which affect the delivered quality, are regularly inspected any drift from the optimally defined proceeding, conform to ISO 9001:2008, ISO 14001:2004 and OHSAS 18001:2007 requirements (*GP4 - Internal QHSE Audit Procedure*).

Customer-oriented *QHSE Policy*, driving force behind the major decisions and actions of senior management has led the company to monitor its quality its quality performance against tough targets of business excellence (*GP8 – Indexes and Indicators Procedure*).



2.1 Organization Chart





2.3 Tender

- **Under the authority of Sales Manager and responsibility of a qualified engineer:** a sound and efficient business approach to get the best technical solutions, devised with the overriding concern of meeting client's needs.

- Thanks to a comprehensive and **updated list of approved suppliers**, our Engineering Section has room to choose the right vendors whose materials quality/price ratio together with after sales support will best fit the client's particular requirements.

Always on a technological watch, he will strive to make the client benefit from the latest market development in electro-mechanical installation, if allowed so.

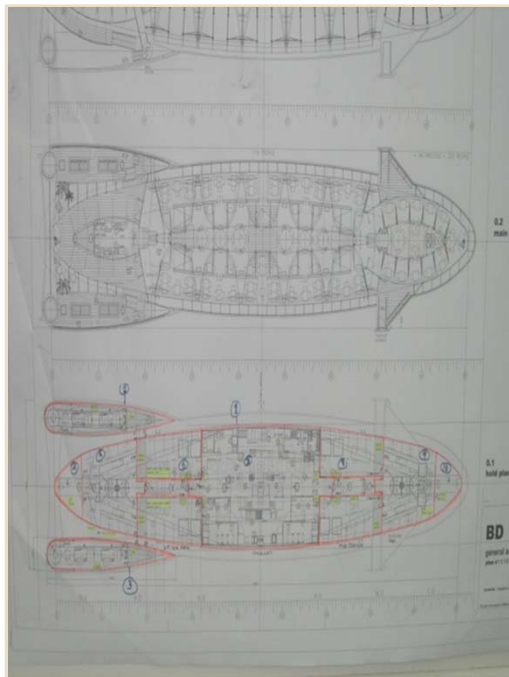
- Worked out in close conjunction with the divisions and/or departments, if required, the **offer** will be subsequently **checked by the management** to ensure its **relevance** and **suitability**.





2.4 Design and Engineering

- The **ELV Design duties** are split up with a view to preserve the best of specialized competencies and foster maximum creativity, in the two domains.
- From the initial job assignments, optimally planned within the general time schedule, the project joint works are all the more facilitated that the designers carry out their duties in a single room, comfortably air-conditioned and ergonomically furnished.



- The drawings, performed under the latest widely covered **AutoCAD** software, on powerful PCs have to pass successive control steps: scrutiny by the Technical Support Engineer, often followed by an **additional management verification** for **complex jobs**, before their final submittal to the consultant approval.
- With the latest technology at hand, the section's output has substantively gained in **productivity, quality and reliability**, giving nothing but entire satisfaction to the customers.



2.5 Project Execution

- Adequately programmed through a collaboration of all the parties (*Sales Section, Engineering Section, Operations Section and Logistic Department and Site teams*), which produce a collection of expert advice, the project is entrusted to a **Operations Manager**, under the overall supervision of the Project Coordinator.

- Drawings and materials approval by the consultant stand for the starting point of the related site works, to be executed, tested, commissioned, and handed over to the client, within the allotted time.

- Suitably manned as per the updated workload, the site is initially organized according to the specificity of the job, hierarchical levels optimized in order to get the best output from a responsible and earnest personnel.



Verger Delporte Staff – Dubai
Airport Free Zone – Dubai

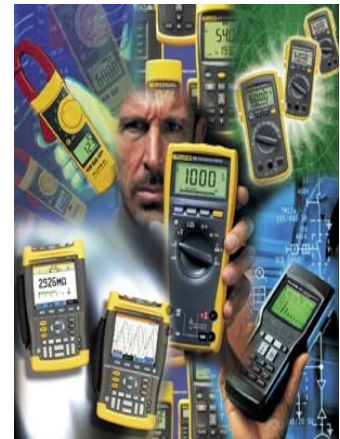


Dubai Airport Free Zone Phase VII – Dubai



2.6 Installation, Control and Reception

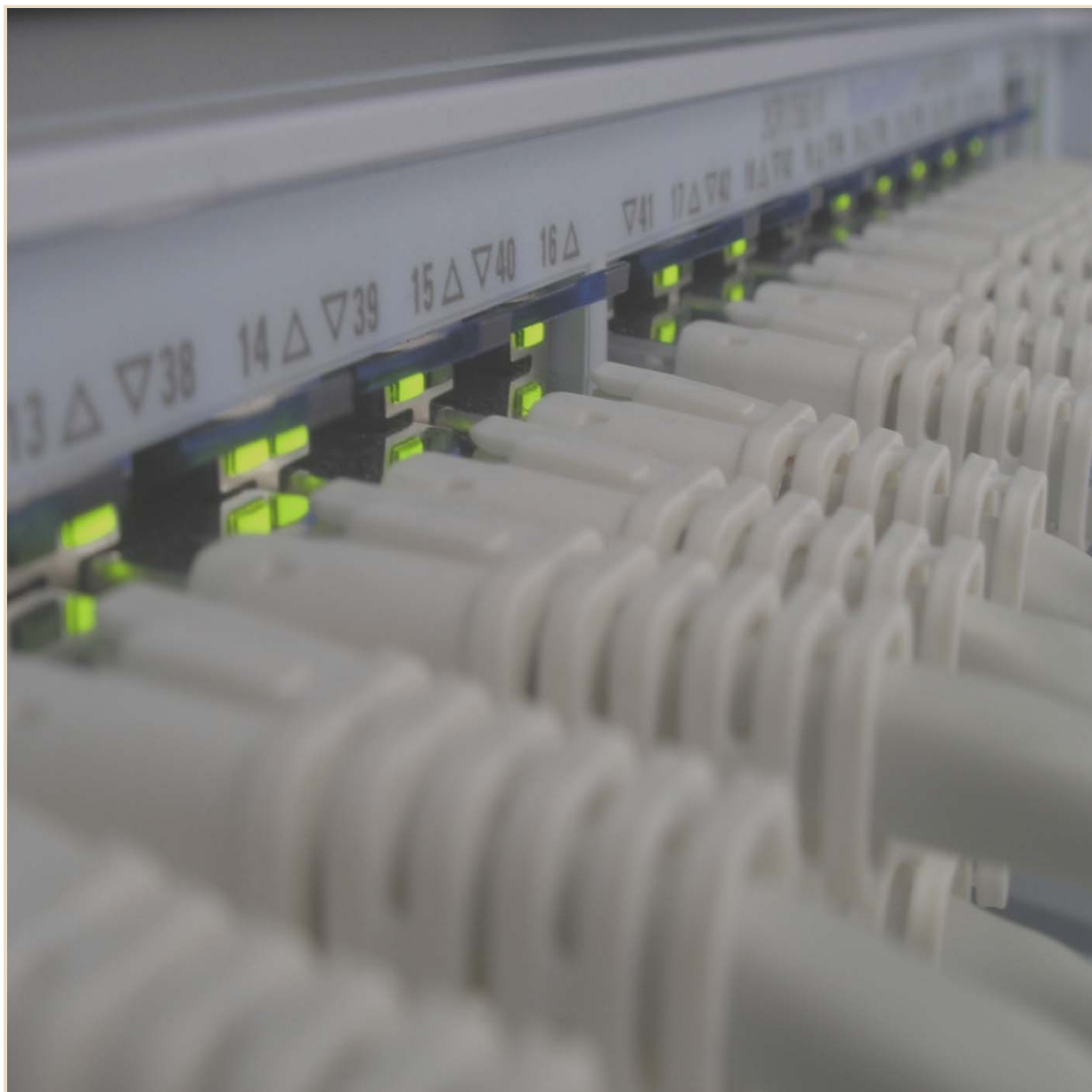
- Clearly of outstanding concerns for the consultant, main contractor or end user, the **Final visual inspection, Testing and Commissioning** duties are entrusted to duly **authorized personnel**, often **certified by local authorities** for specific type of operations.
- These personnel are reckoned among site people, allotted with the appropriate **equipments and measuring instruments** which are **carefully controlled** (outside **calibration** when needed, program of internal **periodical check**, ...).
- What evidence could we provide to a customer or any third party, likely but legitimately concerned of our delivery's conformance to his specified requirements and other applicable standards ?
- Proper **QHSE Records** are just thoroughly maintained for that very purpose. They bear written trace of all the actions that directly or indirectly affect the quality of product and service delivered to the customer: **measuring instruments checking reports, calibration reports, Testing and Commissioning reports**.
- Finally, the client is given an **Operation and Maintenance Manual**, where he will find all relevant information necessary to a safe and efficient operating of the installation.



Advanced Test Equipment Corp © 2004



3.0 Structured Cabling





3.1 IT Network Solutions

- LAN / WAN Design and Implementation
- Network Cabling (Structured Cabling System using CAT3, CAT 5e, CAT 6, CAT 6A, CAT 7 and Fiber Optics)
- Active / Passive Network Components
- Intelligent Patch Panel Monitoring using I-tracks solution



Dubai Airport Free Zone – Phase IV MDF Room



3.2 Executed Projects

UAE University in Al Ain with 40 Buildings in one Campus:

- Cat 6 UTP structured data cabling with over 40,000 nodes – with multi mode internal redundant FO backbone
- Intelligent patching network using ITRACS monitoring solution
- Complete external fiber redundancy for all buildings from a central services building to cater the Engineering Services Network (24 core single mode complete redundant FO network over the campus)



UAE University – Al Ain



3.2 Executed Projects

Novotel & Ibis towers in Abu Dhabi

- Cat 3 and Cat 6 Structured Cabling with 3, 900 nodes
- 12 core multi mode fiber optic backbone with redundancy



Novotel & Ibis towers - AD



3.2 Executed Projects

Millennium Golf Resort in Al Ain

- Cat 6A Structured Cabling with 3, 000 nodes (Telephone & Data)
- Cat 6 Structured Cabling with 170 nodes (CCTV)
- 8 core single mode fiber optic backbone with redundancy
- 2 core single mode fiber optic for Etisalat



Millennium Golf Resort – Al Ain



3.3 References for Structured Cabling



Dubai Airport Free Zone – Dubai

Dubai Airport Free Zone

- DAFZ Phases IV, V and VI (East)
Cat 6 UTP and S/FTP structured data cabling with 20,000 nodes
- DAFZ Phases IV, V and VI (West)
Cat 6 S/FTP structured data cabling with 16,416 nodes
- DAFZ Headquarter Building
Cat 6 S/FTP structured data cabling with 500 nodes
- DAFZ Phase VII (West)
Cat 6 S/FTP structured data cabling with 7,112 nodes



3.3 References for Structured Cabling

Ritz Carlton Hotel at DIFC, Dubai

- Cat 6 UTP structured data cabling with over 8,000 nodes
- Multi mode internal redundant fiber optic backbone

Ritz Carlton – Dubai



Dalma & Yassat Towers / Bavaria Hotel in Dubai

- Cat 3, Cat 5e, Cat 6 Structured Cabling with 5,690 nodes
- 12 core multi mode fiber optic backbone with full redundancy for data

Dalma & Yassat – Dubai





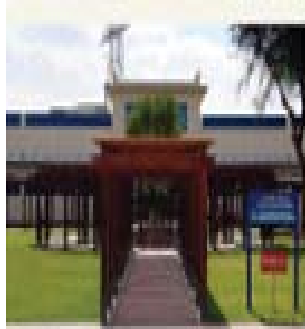
3.3 References for Structured Cabling

Abu Dhabi University

- Cat 6 UTP structured data cabling with 1,500 nodes
- 6 km Fiber Optic



معهد التكنولوجيا التطبيقية
INSTITUTE OF APPLIED TECHNOLOGY



Institute of Applied Technology (formerly Technical School RAK)

- Cat 3, Cat 5e, Cat 6 and fiber optic structured data cabling with 1,200 nodes

French School - Dubai

- Cat 3, Cat 5e and fiber optic structured data cabling with 600 nodes



Bateaux Dubai

- Cat 5e UTP Structured Data Cabling

Mina Mussafah – Abu Dhabi

- Cat 6 UTP structured data cabling and fiber optic inter-linking between 7 buildings





3.3 References for Structured Cabling

BESIX Head Office Extension
• Cat 6 UTP structured data cabling
with 800 nodes



ESSEX
• Cat 7 SFTP structured data cabling with
170 nodes





3.3 References for Structured Cabling





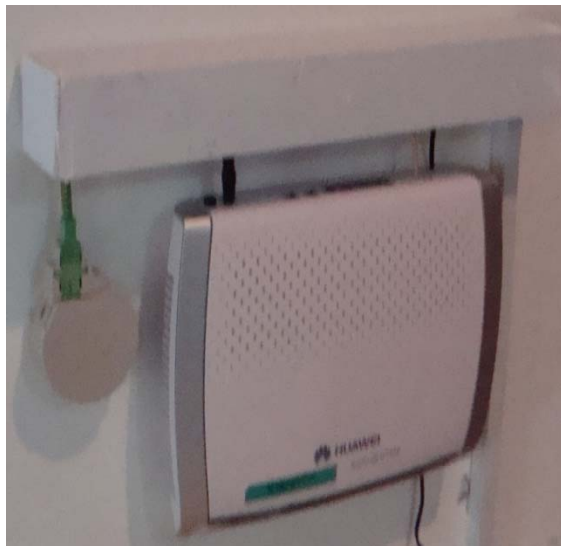
3.4 Etisalat Contractor – eLife

Etisalat has been the telecommunications service provider in the UAE since 1976, and has built up a modern telecom infrastructure and established itself as an innovative and reliable operator.

The IT Division has been Contracted by Etisalat to carry out their new Fiber-To-The-Home (FTTH) network, known as “eLife”. This advanced technology of choice for home consumers looking to keep pace with high-bandwidth internet applications and home entertainment options such as High-Definition (HD) TV/Video and Video-On-Demand (VoD) services, online gaming, distance learning health monitoring as well as new fixed line telephone functions.

Our team has been trained various times at Etisalat Academy to be fully capable of managing the FTTH installation requirements.

Source: www.etisalat.ae



GPON Project - Dubai



GSM Project – Dubai



3.5 Certificate of Appreciation



حكومة دبي
سلطة المنطقة الحرة بمطار دبي
GOVERNMENT OF DUBAI
DUBAI AIRPORT FREE ZONE AUTHORITY

شهادة تقدير
Certificate of Appreciation

To Verger Et Delporte إلى

تتقدم سلطة المنطقة الحرة بمطار دبي بجزيل الشكر ووافر الإمتنان لما قدمتموه من جهود وإسهامات كان لها الأثر الإيجابي في تحقيق الإنجازات المستمرة.

In honor of your outstanding performance and dedication we gladly present this certificate in recognition for your high standards of continuous support to **Dubai Airport Free Zone Authority (DAFZA)**.



MOHAMMED AL-ZAROUNI, PH.D. د. محمد الزرعوني
DIRECTOR GENERAL المدير العام

Dubai Airport Free Zone (DAFZ) –
Recognition for the Structured Cabling works for 2006-2007



3.6 Quality of Work





3.7 Equipment Used for Structural Cabling



Fujikura fusion splicing kit



Fujikura fusion splice



Fujikura ribbon splice



Fluke LAN testing kit



Fluke OTDR kit



Fluke OTDR tester



4.0 Uninterruptible Power Supply (UPS) Systems



APC®

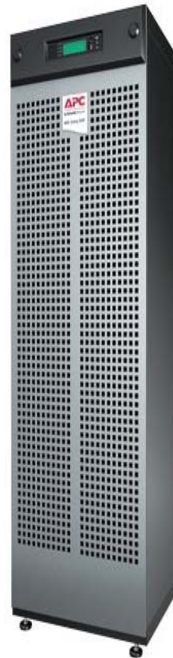
by **Schneider** Electric



4.1 APC-MGE UPS Systems – 10kVA up to 1 MW



SMART-UPS VT



GALAXY 3500



GALAXY 5000



SYMMETRA PX
Latest technology
for UPS, scalable up
to 160 kVA capacity



SYMMETRA MW



4.2.1 Infosec UPS Systems – 1kVA up to 300kVA



M4T 15-60 kVA



Power Master TT
120-300 kVA



M3X
80-100 kVA



Everest 4 LCD Series 1-20 kVA





4.2.2 Infosec UPS Systems – 500VA up to 24kVA



Everest 4 LCD Series
 1-20 kVA



On Line
 Double Conversion Technology



Everest 3 LCD Series
 1-3 kVA



E6 LCD RT Evolution 1 to 3 kVA



X2 Series
 500-1500 VA



The most reliable of technologies



E6 LCD RT Evolution 5 to 10 kVA



4.3 In-house workshop and testing facility

Some activities done in our workshop:

- In-house testing or burn-in test for all UPS prior to delivery to clients
- Troubleshooting of faulty UPS by certified UPS Engineers
- Testing of all available batteries to ensure quality and reliability
- Load bank testing of all UPS to ensure the proper operation and meets designed back-up time of all UPS



Resistive load bank from 1kW to 100kW
**Available to conduct on-site load bank test upon client request*





4.4 Equipment Used for UPS Installation & Commissioning

- **Heavy duty battery load test**

- This equipment is used to ensure batteries are in good condition to provide quality performance.
- Applying an industry-leading 130 amp load, this ergonomically designed, heavy-duty battery tester provides accurate, reliable test results in just 10 seconds. It includes uniquely designed clamps for a positive grip on top and side post batteries and an extra large, easy-to-read display.

- **Fluke multimeters and power quality analyzers**

- Maintaining good power quality of your electrical grid is very important. It helps identify and correct the factors impacting power quality.



Features and Benefits:

- 130 amp load capacity for accurate results
- 0-16 volt range
- Uniquely-designed clamps for both top and side post batteries
- Extra large display with zero adjust
- Works on both 6V and 12V batteries
- Ergonomic handle design
- Side tabs for on-tool clamp storage
- Back brackets for tool storage on wall or toolbox





4.5 UPS Maintenance Contract

- From commissioning to UPS training and equipment hire, we deliver a menu of value-added services enabling you to get the best out of your UPS.
- We provide installations that are accurate and industry-standard.
If it is on-going maintenance or project management you need, Verger Delporte provides a number of options, plus an indicated solution, that will get the job done and keep you protected – without interruption!
- We also provide a range of monitoring and diagnostic software and services. That ensure problems are solved before they become issues, to enable smooth running of your system. Our on-site service confirms the integrity of your installation – as does battery testing and load bank tests.





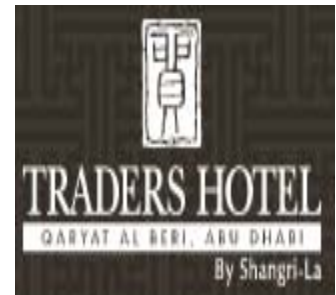
4.5.1 References for UPS Systems in UAE

BMW showroom in
 Umm Al Nar, AUH
 *1 unit of 120kVA



RITZ CARLTON hotel in DIFC
 *2 units of 30kVA
 *1 unit of 60kVA

TRADERS HOTEL
 in Abu Dhabi
 *3 units of 40kVA



Burj Dubai plot 12 &
 13 project
 *3 units of 30kVA



SPECIALIST
 SERVICES
 *2 units of 5kVA in
 Parallel



Trans Gulf
 for Meraas sales center,
 Jumeirah Garden City, Dubai
 *1 unit of 60kVA
 *2 units of 30kVA in Parallel



4.5.1 References for UPS Systems in UAE



TABREED DISTRICT
COOLING
in Yas Island, AUH
*1 unit of 25kVA



Union Properties
For Commercial Bank
of Dubai



*1 unit of 20kVA



Royal Group Tower
In Abu Dhabi
*1 unit of 60kVA



Dubai Mall project
Communication Room
*1 unit of 60kVA



Moorfields Hospital in
Health Care City, Dubai
*1 unit of 40kVA



4.5.1 References for UPS Systems in UAE



HSBC bank in
 Deira
 *1 unit of 60kVA



ADCB in Dubai
 *1 unit of 30kVA



Ahli Bank of
 Kuwait
 *1 unit of 30kVA



NATIONAL BANK
 OF ABU DHABI
 *5 units of 10kVA



DOHA BANK
 *1 unit of 5kVA



ABU DHABI
 ISLAMIC BANK
 *1 unit of 20kVA



NATIONAL BANK OF
 FUJAIRAH
 *3 units of 30kVA
 *1 unit of 20kVA
 *1 unit of 15kVA
 *1 unit of 10kVA
 *6 units of 3kVA
 *2 units of 20kVA in parallel



DUBAI
 INTERNATIONAL
 FINANCIAL
 EXCHANGE
 *1 unit of 30kVA



4.5.1 References for UPS Systems in UAE



Al Dhafra Military Air Base
 *1 unit of 160kVA



MINISTRY OF LABOR, DUBAI
 *1 unit of 20kVA



FUJAIRAH INTERNATIONAL AIRPORT
 *1 unit of 40kVA
 *2 units of 20kVA
 *1 unit of 10kVA



MINISTRY OF CABINET AFFAIRS, Abu Dhabi
 *1 unit of 30kVA



THE EDGE PROJECT
 *2 units of 30kVA
 *1 unit of 6kVA

هيئة كهرباء ومياه الشارقة
 Sharjah Electricity & Water Authority



SHARJAH ELECTRICITY & WATER AUTHORITY
 *3 units of 10kVA
 *1 unit of 3kVA



DANWAY FOR SHARJAH REAL ESTATE PROJECT
 *1 unit of 60kVA
 *1 unit of 40kVA



SHARJAH POLICE
 *4 units of 20kVA
 *1 unit of 30kVA



4.5.1 References for UPS Systems in UAE



EMCO
 for Sharaf DG
 Electronics
 *4 units of 60kVA
 *1 unit of 30kVA



RICHEMONT
 *1 unit of 10kVA



DEYAAR
 *1 unit of 15kVA
 *1 unit of 20kVA



ETA ASCON
 for IT department
 *1 unit of 15kVA



FRENCH SCHOOL,
 Dubai
 *1 unit of 30kVA



CIMAC
 *60 units of
 1kVA
 *25 units of
 E4 2kVA
 *10 units of
 3kVA



AL NABOODAH
 GROUP
 *2 units of 20kVA



AMERICAN
 UNIVERSITY OF
 SHARJAH
 *5 units of 10kVA
 *7 units of 3kVA
 *2 units of 2kVA



4.5.1 References for UPS Systems in UAE



EITC – DU

- * 3 units of 100kVA
- * 2 units of 200kVA
- * 4 units of 300kVA
- * ATS Panels



ETISALAT

- * 130 units of 3kVA R/M–
for Burj Khalifa Network
Closets



4.5.1 References for UPS Systems in UAE



FUJAIRAH ROTANA
*1 unit of 15kVA
*1 unit of 3kVA
*6 units of 1kVA

GOVERNMENT OF SHARJAH
SHARJAH COMMERCE & TOURISM
DEVELOPMENT AUTHORITY



حكومة الشارقة
هيئة الإنماء التجاري
والسياحي بالشارقة

SHARJAH TOURISM
*1 unit of 6kVA



GUARDIAN ZOUJAJ INTERNATIONAL
FLOAT GLASS CO, LLC
for GUARDIAN RAK project
*1 unit of 20kVA



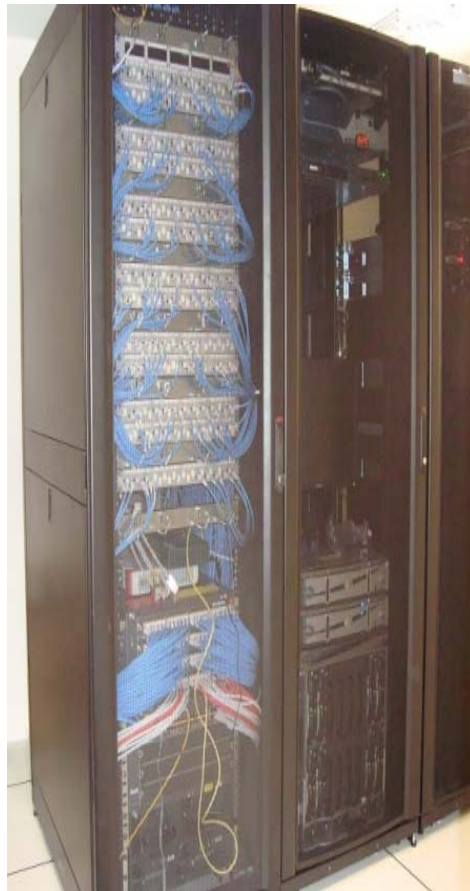
5.0 Active Components





5.1 Area of Expertise in Active Components

- Core and edge switch installation and configuration
- Wi-Fi access point installation and configuration
- Server/workstation installation and configuration
- Intranet, extranet and power protection solutions



Exterran office in DAFZ



5.2 Reference for Active Components in UAE



Successfully implemented the Client's requirement of an advanced network Communication system, providing Gigabit to the desk with a fully managed network including dedicated Core and Server Switches. The solution also include WAN edge security, integrating with the existing network base. The Project scope was all together with supply, design, installation and training for the end-user of the system deployed.





6.0 Data Center





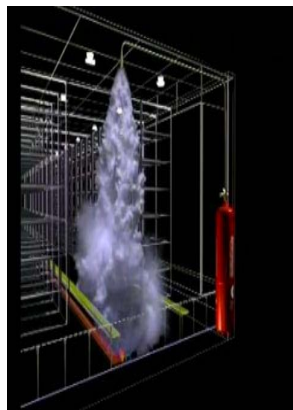
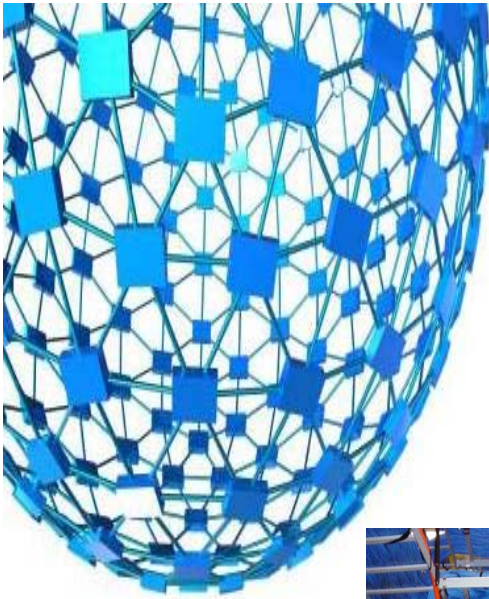
6.1 Components Included within Data Center

- Power
 - Integrated UPS with scalability options and power distribution minimizes cost and offers compact footprint
- Rack
 - Easier installation with tool less rail design, access to rack feet and improved cable management features
- Cooling
 - Range of cooling solutions (In-row, cooling distribution units, ventilation systems) offers “right-sized” rack, row- and room-level designs
- Security and Environmental
 - Access control systems for each rack ensure that only authorized personnel can access key resources, reducing risk of sabotage or human error
- Management
 - Unique Rack Manager allows you to quickly check the status of rack components without entering the rack or going to a workstation





6.2 Data Center Solutions



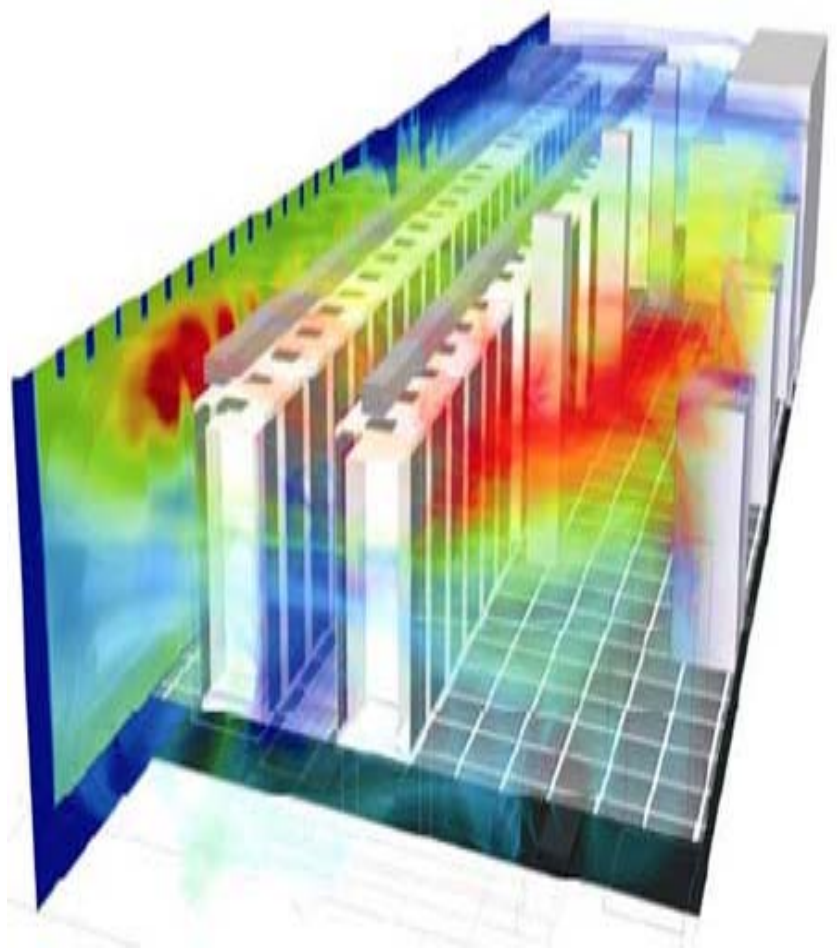
- Structured Cabling
- Mechanical / Electrical / Plumbing (MEP)
- Raised Floors
- False Ceiling
- Fire Suppression
- UPS Systems
- Precision Cooling Systems
- Monitoring Solutions
- BMS and Associated Low Voltage Components
- Access Control
- Active Components
- CCTV / IP Cameras



6.2 Data Center Solutions

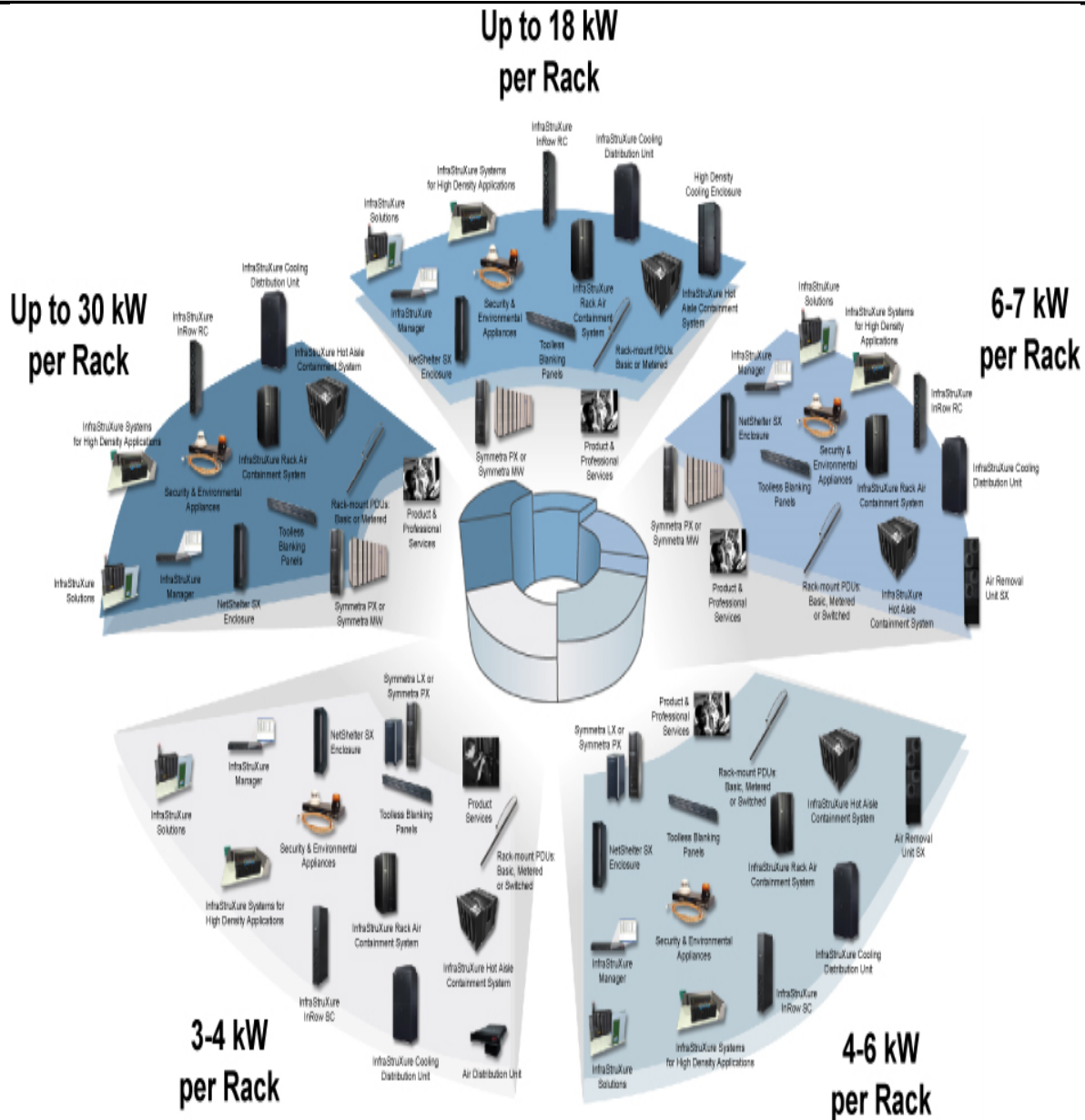
350VA UP TO 1.6MVA

- APC and MGE are committed to delivering the most innovative solutions, such as the award-winning and patented InfraStruXure® power and cooling architecture, and the MGE Galaxy™/EPS range, now powering some of the largest Data Centers in the world.
- Both APC-MGE products provide a wide range of products to suit each application and environment.





6.2 Data Center Solutions



High Density Solutions





6.3 Reference for Data Centers in UAE



LEGATUM - DATACENTER UPGRADE

- *APC InfraStruXure Solution
 - Symmetra PX 30kVA Scalable to 40kVA UPS
 - NetShelter Racks
 - InfraStruXure Manager
 - NetBotz Monitoring Devices
- * Raised Flooring
- * Cooling Solution
- * Structured Cabling



CHI HOTEL & RESORTS - DATACENTER

- *1 unit of 15kVA UPS
- *Raised Flooring
- *Precision Cooling Solution
- *Fire Suppression System using FM200



DEIRA INVESTMENT

- *2 units of 10kVA UPS
- *1 unit of 40kVA UPS

